

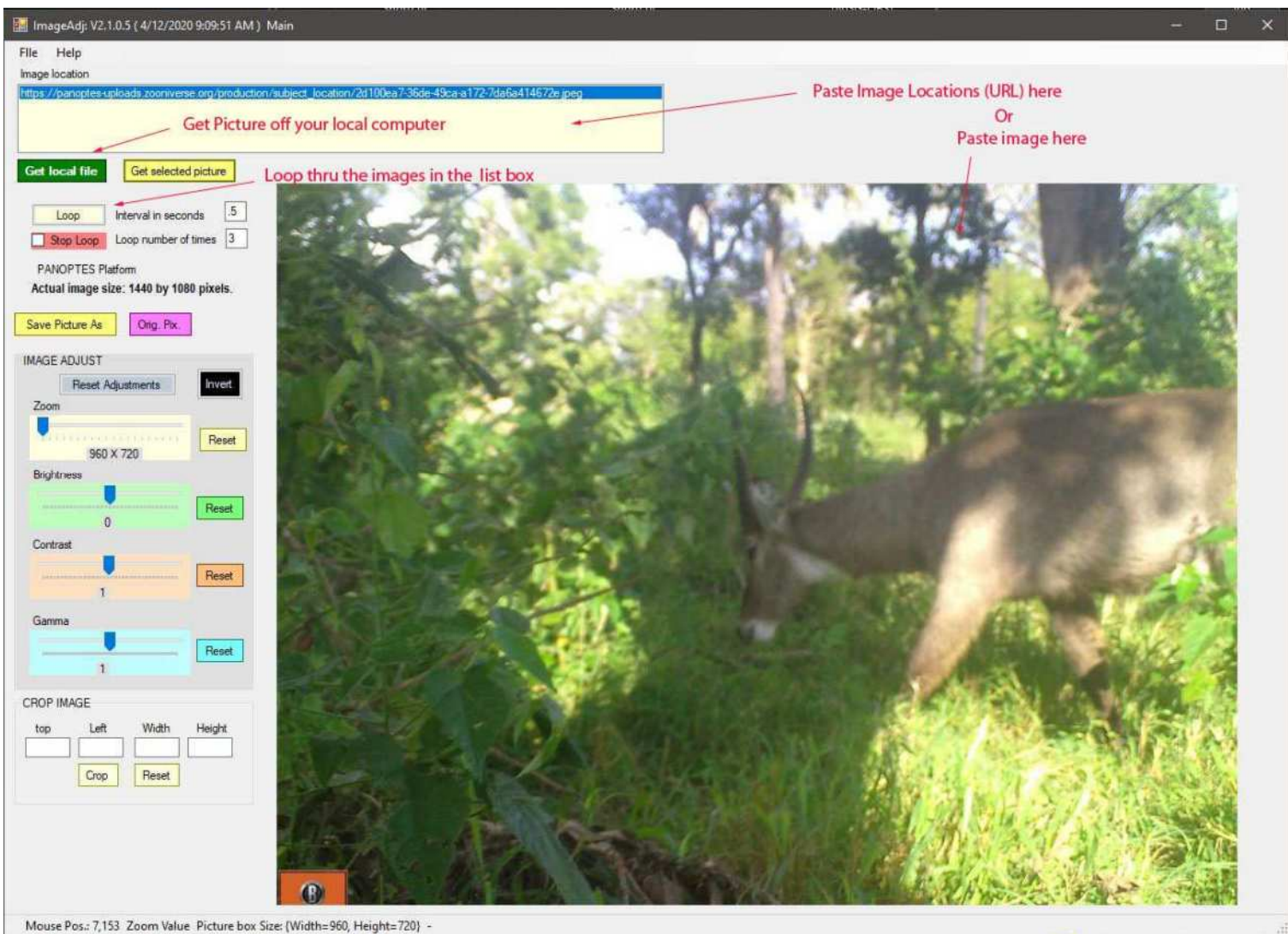
IMAGEADJ (V 2.0)

Description:

ImageAdj is a program that lets you do some basic image manipulation. This is not an image processing program, per se. It was primarily developed for use with the Gorongosa wild cam project on Zooniverse. However it can be used to inspect any image, on your PC or off the internet.

Often images from a trail-cam can have deep shadows that may be hiding something interesting. ImageAdj lets you import that image and change the Gamma, Brightness and or the Contrast to help you see what's lurking in the shadows.

The program is written for Windows OS and requires Microsoft .NET Framework 4.6.1 or later.



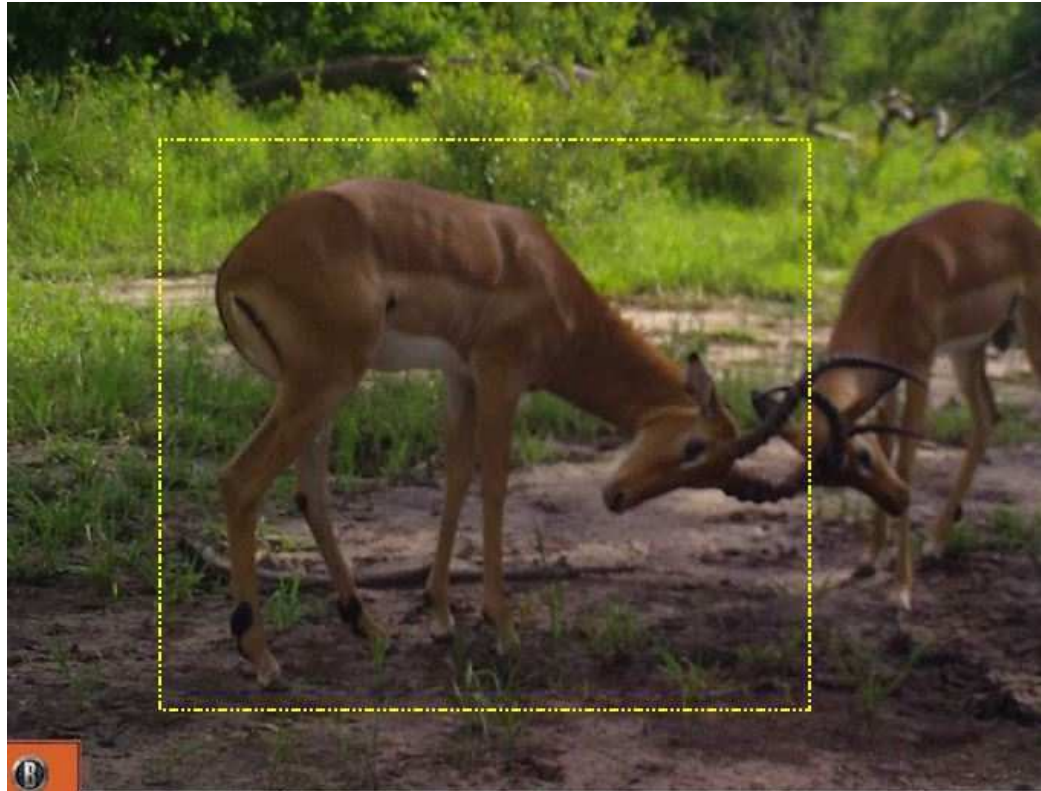
Program Features:

- There are number of ways to get an image into the program:
 - Click on Get local File button will open a dialog allowing you to select a file from your computer.

- Copy an image location and paste it into the Image location list. If you have copied a location path (local or URL) to your clip-board and then open the program the image will be displayed at that time. You can paste multiple image locations into the list box.
- You can copy the image itself to your clip-board and paste it into the picture box by right clicking on the picture box and select PASTE or depress the ALT and V simultaneously.

For most users the simplest process is to copy the image to your clipboard and paste it into the picture box. Most browsers support that function.

- The LOOP feature will sequence thru the images in the list box:
 - Interval – sets how long, in seconds, that the image will be displayed .
 - Loop Number of times – how many loop cycles you want to do.
- INVERT: will invert the color schema on the image.
- Clicking the GET PICTURE button will recall the original image.
- CROP IMAGE section:
 - Shows the mouse location of the crop as well as the width and height of the cropped area.
 - Contains CROP button
 - Contains a Crop reset button
- ORIG PX: Reloads the picture to fit the Picture box.
- Sliders are provided to allow you to adjust the Brightness, Contrast and Gamma of the image
- SAVE PICTURE AS: This button allows you to save the image on your PC. It will be saved with the changes you made with the sliders. A dialog will let you select the picture location, Name, and format (JPG, BMP, GIF, PNG) . The original file will not be over written unless you choose to.
- RESET ADJUSTMENTS: As it indicated clicking this button will reset the ZOOM and other image adjustments to their default value and paint the original picture.
- RIGHT MOUSE CLICK: a right click of the mouse, while on the picture, will present a list of options.
 - CLEAR ALL/PASTE: Clears the list box and pastes the address on the clipboard into the box
 - PASTE IMAGE: If an Image has been put on your clip-board it will be pasted into the picture box
 - SAVE IMAGE: This behaves the same as *Save Picture as* function above.
 - GET ORIGINAL PIX File: Behaves the same as the *ORIG PX* above.
 - INVERT COLOR: behaves same as the *INVERT COLOR*



- CROP IMAGE: To crop an image you must first select the area you want to crop out. You do this by left clicking on the mouse and then depress the ALT key while moving the mouse. This will draw a box (as shown above).
 - Crop: This will crop the selected section from the main picture
 - Reset Selection: will reset the crop selection
- ZOOM:
 - Scroll the mouse wheel while over the picture will zoom in or out.
 - You can move the picture around by holding the left mouse button and moving the mouse.
 - You can also zoom by using the ZOOM slider. However, this is a very coarse adjustment. The mouse wheel is a much better option.

HELP:

If you run into problems or have some suggestion on how to improve the program drop me a line at njsg@comcast.net

HOW TO:

Here is the flow that I use when working with the Gorongosa project. First off I use FireFox browser since it has a direct way of copying the image location to your clipboard and pasting it into the Image location box in IMAGEADJ.

Other browsers make you jump thru hoops.

- When you right click on the image you need to select INSPECT ELEMENT.
- This will bring up the DEBUG window and highlights the picture element.
- Select the highlighted portion and paste into you Notepad or other text editor

- In the text editor select the URL for the image. It looks something like this, https://panoptes-uploads.zooniverse.org/production/subject_location/ef0544c1-c2b5-4ef1-9b3a-4a32cf3582bb.jpeg
- Now open IMAGEADJ and paste the images URL in the image location box.
- Now do the same process for the second image in the set and paste it in the box.

Once you have the images loaded into IMAGEADJ you can adjust the gamma , brightness, and/or contrast as you need. You can also ZOOM in and out using the zoom slider or the mouse wheel.